

# English-language disclosure by JPX-Nikkei 400 constituents, 2017

January 8, 2018

**IDS** International Disclosure Services Corporation  
CORPORATION

Note: This report has been created based on objective research, and does not constitute a recommendation of any particular method of disclosure or presentation. This report has been created and compiled based on careful research, but its accuracy is not guaranteed. Copyright pertaining to this report belongs to International Disclosure Services Corporation, and it may not be redistributed or reproduced without the permission of International Disclosure Services Corporation.

## Contents

1. Scope of research .....	2
2. Proxy statements .....	2
Rate of English translation .....	2
Scope of English translation .....	3
Maps and instructions regarding the exercise of voting rights .....	4
3. Notices of resolutions .....	5
Rate of English translation .....	5
4. Results of the exercise of voting rights (extraordinary reports) .....	6
Rate of English translation .....	6
5. Financial results ( <i>kessan tanshin</i> ) .....	8
Rate of English translation .....	8
Frequency of translation .....	10
Scope of English translation .....	10
6. Presentation materials for earnings briefings .....	12
Rate of English translation .....	12
Frequency of translation .....	13
7. Duplication of information between documents and scope of disclosure .....	14
8. English translation of each type of document .....	14
Research results overview .....	Appendix 1

English-language disclosure by listed companies in Japan has been rapidly increasing since the application in June 2015 of Japan's Corporate Governance Code, which contains a number of items related to English-language disclosure. In particular, JPX-Nikkei Index 400 constituent companies appear to be focusing on English-language disclosure owing to selection criteria for the index specifying that "English documents regarding the most recent earnings information are disclosed via TDnet (Company Announcements Distribution Service in English)."

In this report, we consider the extent and scope of JPX-Nikkei 400 constituents' translations of key disclosure documents, and identify recent trends by comparing the results with our findings in 2015.

## 1. Scope of research

We researched the English-translation of five types of document: proxy statements for annual general meetings, notices of resolutions, results of the exercise of voting rights (extraordinary reports), financial results (*kessan tanshin*), and presentation materials for earnings briefings.

Companies are also increasingly translating press releases, but we have excluded them from the scope of this research because many companies only translate certain press releases, and it is difficult to make comparisons between companies as the standards and frequency of translation vary between companies.

An overview of the results of our research into the JPX-Nikkei 400 constituents is provided at the end of this report. Comparisons are based on the results of our research in 2015, which can be found here: [English-language disclosure by JPX-Nikkei 400 constituents, 2015](#).

## 2. Proxy statements

### Rate of English translation

In 2017, 352 companies out of 400 JPX-Nikkei 400 constituents translated their proxy statements, or 88.0%. This represents a significant increase from 2015, when 272 companies (68.2%) translated their proxy statements (table 1, figure 1).

Breaking this down by the proportion of foreign shareholders, 1) 82.6% of companies with up to 10% foreign shareholders translated their proxy statements, compared with 2) 80.0% of companies with 10-20% foreign shareholders, 3) 85.0% of companies with 20-30% foreign shareholders, and 4) 94.3% of companies with more than 30% foreign shareholders. In 2015, few companies with 20% or less foreign shareholders translated their proxy notices, but the proportion doing so increased significantly in 2017, such that similar proportions of companies with up to 10% foreign shareholders, 10-20% foreign shareholders, and 20-30% foreign shareholders translated their proxy statements. It seems that in 2015, the proportion of foreign shareholders was a key factor in most companies' decision whether or not to translate their proxy statements, whereas in 2017, this information played less of a role in companies' decision-making, amid an increasing focus on corporate governance in recent years (table 2, figure 2).

In terms of industries, 1) 92.7% of manufacturing companies, 2) 81.1% of service companies, and 3) 93.2% of financial companies translate their proxy statements. Compared with 2015, the proportion of companies translating their proxy statements has increased across all industries, although the proportion of service companies remains relatively low compared with other industries (table 3, figure 3).

Table 1 Number of companies creating English translations of their proxy statements

	2015		2017	
With translation	272	(68.2%)	352	(88.0%)
No translation	127	(31.8%)	48	(12.0%)

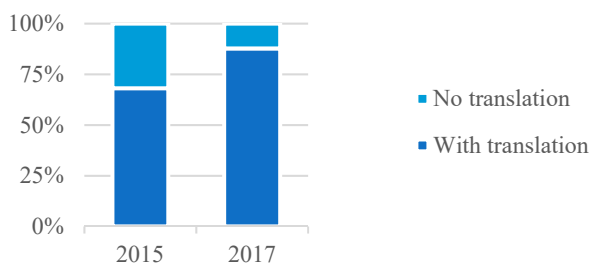
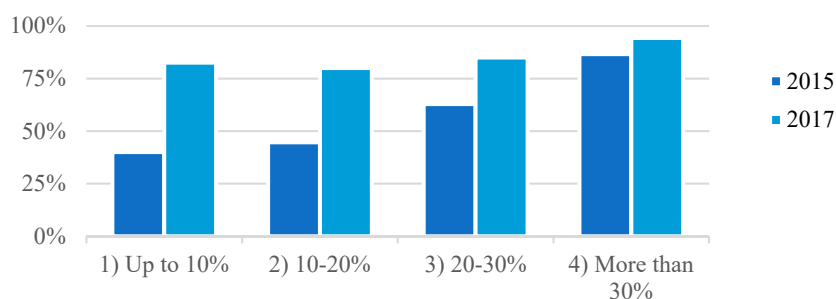


Figure 1 Rate of English translation of proxy statements

**Table 2** Rate of English translation of proxy statements by proportion of foreign shareholders

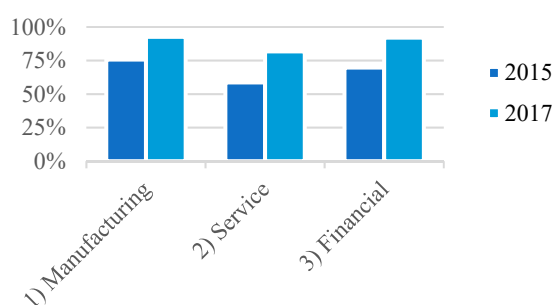
Proportion of foreign shareholders	2015		2017	
1) Up to 10%	4/10	(40.0%)	19/23	(82.6%)
2) 10-20%	42/94	(44.7%)	60/75	(80.0%)
3) 20-30%	78/124	(62.9%)	108/127	(85.0%)
4) More than 30%	148/171	(86.6%)	165/175	(94.3%)
<b>Total</b>	<b>272/399</b>	<b>(68.2%)</b>	<b>352/400</b>	<b>(88.0%)</b>



**Figure 2** Rate of English translation of proxy statements by proportion of foreign shareholders

**Table 3** English translation of proxy statements by industry

Industry	2015		2017	
1) Manufacturing	146/193	(75.7%)	178/192	(92.7%)
2) Service	96/163	(58.9%)	133/164	(81.1%)
3) Financial	30/43	(69.8%)	41/44	(93.2%)
<b>Total</b>	<b>272/399</b>	<b>(68.2%)</b>	<b>352/400</b>	<b>(88.0%)</b>



**Figure 3** Rate of English translation of proxy statements by industry

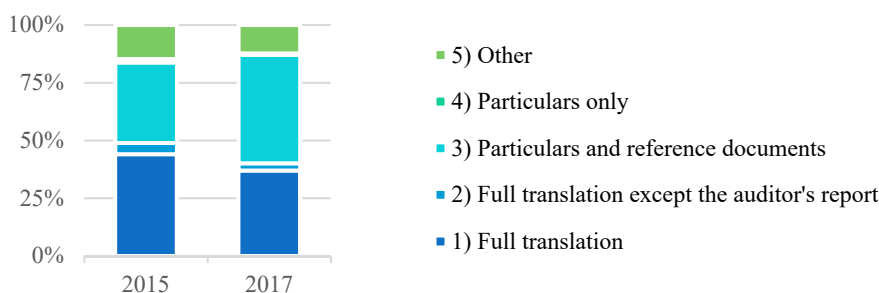
**Scope of English translation**

We compiled data on the scope of English translation based on five categories: 1) full translation, 2) full translation except the auditor’s report, 3) particulars and reference documents, 4) particulars only, and 5) other (table 4, figure 4). In 2015, more companies (44.1%) chose to create a full translation than any other category, but the proportion of companies creating a full translation fell to 37.0% in 2017. Still, the actual number of companies creating a full translation increased from 120 to 130 companies. In 2015, the second-most popular category after “full translation” was “particulars and reference documents” with 34.9% of

companies choosing to translate these documents, but in 2017, the proportion of companies translating these documents increased to 47.0%, meaning “particulars and reference documents” overtook “full translation” to become the most popular category. Although there was a decline in the proportion of companies creating a full translation, it appears that many of the 80 companies opting to translate their proxy statements for the first time in 2017 decided to translate the particulars and reference documents. We will be looking closely at whether these companies move to a full translation in future.

**Table 4** Number of companies by scope of English translation

	2015 (% of 272 companies translating their proxy statements)		2017 (% of 352 companies translating their proxy statements)	
1) Full translation	120	(44.1%)	130	(37.0%)
2) Full translation except the auditor’s report	13	(4.8%)	11	(3.1%)
3) Particulars and reference documents	95	(34.9%)	165	(47.0%)
4) Particulars only	4	(1.5%)	2	(0.6%)
5) Other	40	(14.7%)	43	(12.3%)



**Figure 4** Rate of English translation of proxy statements by scope of translation

**Maps and instructions regarding the exercise of voting rights**

Japanese versions of proxy statements usually have a map at the end that shows the vicinity of the meeting venue, but only 5.1% of companies with English translations have maps in English versions of proxy statements, down from 8.3% in 2015. Furthermore, five of these companies have written descriptions of routes from the closest station instead of maps in English versions, but we have included them under “with translation” (table 5, figure 5).

An increasing number of companies include a page with an explanation of how to exercise voting rights in writing and online in Japanese versions of their proxy statements. Of companies with English translations, 50.1% translated these pages, slightly up from 47.8% in 2015. Furthermore, we have only included companies that include these instructions as a separate page, and have not included those where the explanation is a few lines in the particulars (table 5, figure 5).

**Table 5** Translation of maps and instructions regarding the exercise of voting rights

	2015 (% of 272 companies translating their proxy statements)		2017 (% of 352 companies translating their proxy statements)	
With translation of map	16	(8.3%)	18	(5.1%)
With translation of page for instructions regarding the exercise of voting rights	130	(47.8%)	176	(50.1%)

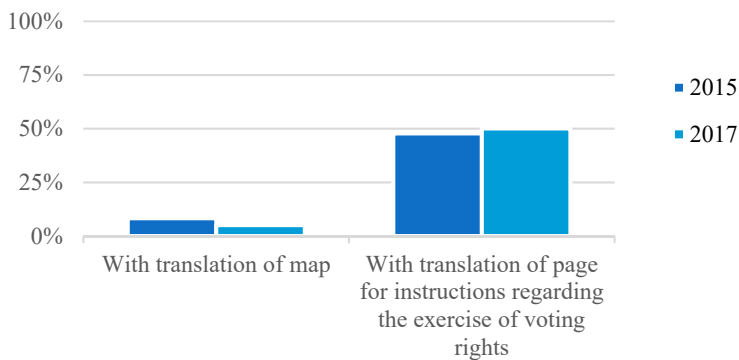


Figure 5 Translation of maps and instructions regarding the exercise of voting rights

### 3. Notices of resolutions

#### Rate of English translation

Out of 400 JPX-Nikkei 400 constituents, 192 companies translate their notices of resolutions, or 48.0%. This marks a small increase from 46.6% in 2015, but the proportion remains lower than the proportion of companies that translate their proxy statements. Furthermore, instead of translating this information as a notice of resolutions, ten companies posted this information online as reports of general meetings on the general meeting of shareholders section of their investor relations websites, but as the content is virtually the same as a notice of resolutions except for the method of payment of dividends, etc., we have counted such companies as translating their notices of resolutions (table 6, figure 6).

The proportion of companies translating notices of resolutions is higher for companies with a higher proportion of foreign shareholders, with 1) 30.4% of companies with up to 10% foreign shareholders, 2) 21.3% of companies with 10-20% foreign shareholders, 3) 42.5% of companies with 20-30% foreign shareholders, and 4) 65.7% of companies with more than 30% foreign shareholders translating notices of resolutions (table 7, figure 7).

In terms of industries, 1) 56.3% of manufacturing companies, 2) 37.2% of service companies, and 3) 52.3% of financial companies translate their notices of resolutions (table 8, figure 8).

Table 6 Number of companies creating English translations of their notices of resolutions

	2015		2017	
With translation	186	(46.6%)	192	(48.0%)
No translation	213	(53.4%)	208	(52.0%)

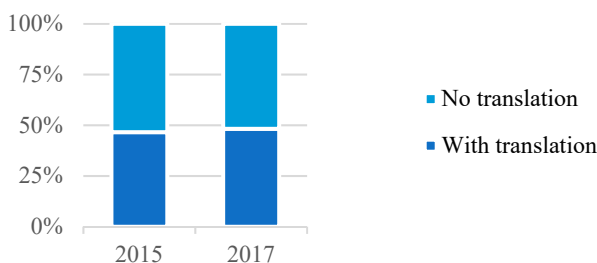
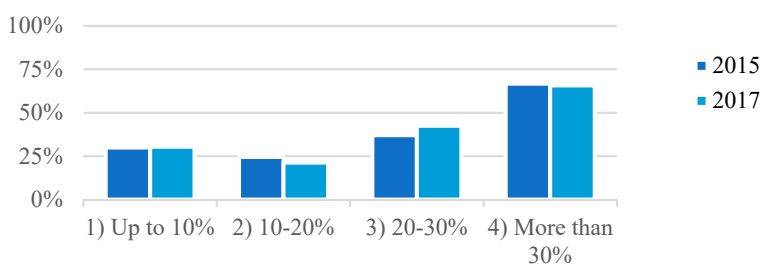


Figure 6 Rate of English translation of notices of resolutions

**Table 7** Rate of English translation of notices of resolutions by proportion of foreign shareholders

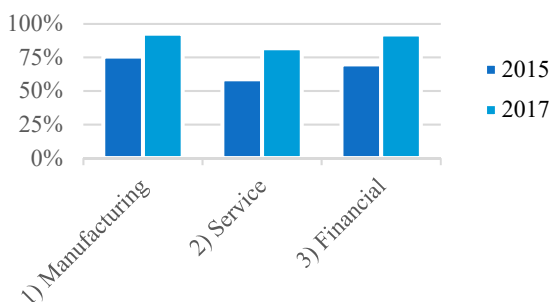
Proportion of foreign shareholders	2015		2017	
1) Up to 10%	3/10	(30.0%)	7/23	(30.4%)
2) 10-20%	23/94	(24.5%)	16/75	(21.3%)
3) 20-30%	46/124	(37.1%)	54/127	(42.5%)
4) More than 30%	114/171	(66.7%)	115/175	(65.7%)
<b>Total</b>	<b>186/399</b>	<b>(46.6%)</b>	<b>192/400</b>	<b>(48.0%)</b>



**Figure 7** Rate of English translation of notices of resolutions by proportion of foreign shareholders

**Table 8** English translation of notices of resolutions by industry

Industry	2015		2017	
1) Manufacturing	100/193	(51.8%)	108/192	(56.3%)
2) Service	64/163	(39.3%)	61/164	(37.2%)
3) Financial	22/43	(51.2%)	23/44	(52.3%)
<b>Total</b>	<b>186/399</b>	<b>(46.6%)</b>	<b>192/400</b>	<b>(48.0%)</b>



**Figure 8** English translation of notices of resolutions by industry

#### 4. Results of the exercise of voting rights (extraordinary reports)

##### Rate of English translation

Out of 400 JPX-Nikkei 400 constituents, 97 companies translate extraordinary reports regarding the results of the exercise of voting rights, or 24.3%, a significant increase from 2015 when 12.5% of companies

translated these documents (table 9, figure 9).

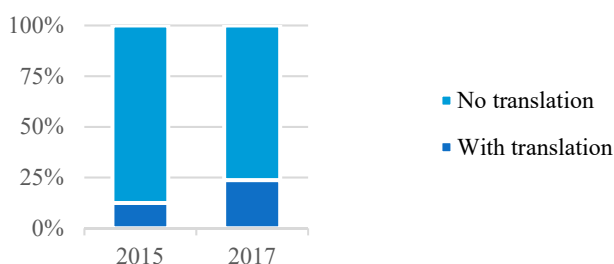
Instead of translating this information as an extraordinary report, some companies presented this information as a table on the general meeting of shareholders section of their investor relations website showing the approval rate and results of resolutions for each proposal (MinebeaMitsumi Inc. and SoftBank Group Corp.). We have counted these companies as translating the results of the exercise of voting rights (extraordinary report).

Looking at the proportion of companies translating extraordinary reports regarding the results of the exercise of voting rights by the proportion of foreign shareholders, 1) 8.7% of companies with up to 10% foreign shareholders translated these documents, 2) 10.7% of companies with 10-20% foreign shareholders, 3) 22.8% of companies with 20-30% foreign shareholders, and 4) 33.1% of companies with more than 30% foreign shareholders. There has thus been a significant increase in the proportion of companies with more than 30% foreign shareholders translating these documents, with one in three companies translating these documents in 2017 (table 10, figure 10).

In terms of industries, 1) 28.6% of manufacturing companies, 2) 14.6% of service companies, and 3) 40.9% of financial companies translate the results of the exercise of voting rights. As in 2015, the proportion of companies in the financial industry providing translations is higher than that of other industries (table 11, figure 11).

**Table 9** Number of companies creating English translations of the results of the exercise of voting rights (extraordinary reports)

	2015		2017	
With translation	50	(12.5%)	97	(24.3%)
No translation	349	(87.5%)	303	(75.7%)



**Figure 9** Rate of English translation of results of exercise of voting rights (extraordinary reports)

**Table 10** Rate of English translation of results of exercise of voting rights (extraordinary reports) by proportion of foreign shareholders

Proportion of foreign shareholders	2015		2017	
1) Up to 10%	0/10	(0.0%)	2/23	(8.7%)
2) 10-20%	5/94	(5.3%)	8/75	(10.7%)
3) 20-30%	18/124	(14.5%)	29/127	(22.8%)
4) More than 30%	27/171	(15.8%)	58/175	(33.1%)
Total	50/399	(12.5%)	97/400	(24.3%)

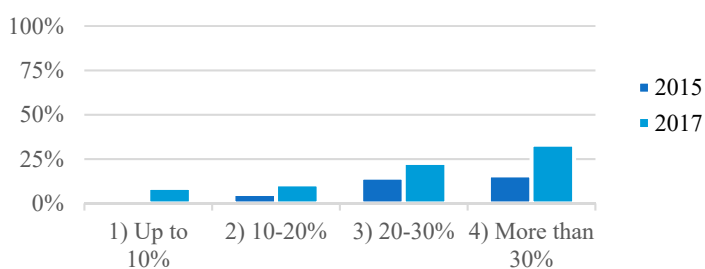


Figure 10 Rate of English translation of results of exercise of voting rights (extraordinary reports) by proportion of foreign shareholders

Table 11 English translation of results of exercise of voting rights (extraordinary reports) by industry

Industry	2015	2017
1) Manufacturing	23/193 (11.9%)	55/192 (28.6%)
2) Service	18/163 (11.0%)	24/164 (14.6%)
3) Financial	9/43 (20.9%)	18/44 (40.9%)
Total	50/399 (12.5%)	97/400 (24.3%)

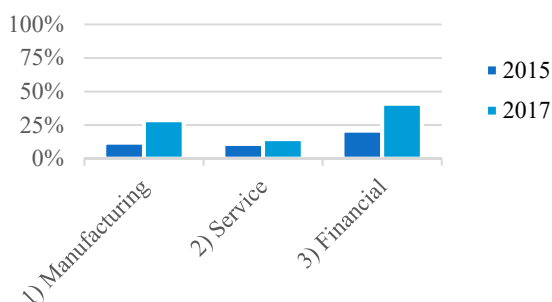


Figure 11 English translation of results of exercise of voting rights (extraordinary reports) by industry

## 5. Financial results (*kessan tanshin*)

### Rate of English translation

Out of 400 JPX-Nikkei 400 constituents, 329 companies translate their financial results (*kessan tanshin*), or 82.3%, a small increase from 81.0% in 2015. In 2015, more companies translated their financial results than any other type of disclosure document, but in 2017, more companies translated their proxy statement (88.0%) (table 12, figure 12 and table 1, figure 1).

The Tokyo Stock Exchange has been providing a “Company Announcements Distribution Service in English” since 2011, but we have not counted use of this service as having a translation of financial results because English-language versions created with this service are presented as a list of numbers, etc. from the summary information, and are more difficult to read than the original summary information.

As in 2015, the proportion of companies translating financial results is higher for companies with a higher proportion of foreign shareholders, with 1) 60.9% of companies with up to 10% foreign shareholders, 2) 72.0% of companies with 10-20% foreign shareholders, 3) 82.7% of companies with 20-30% foreign

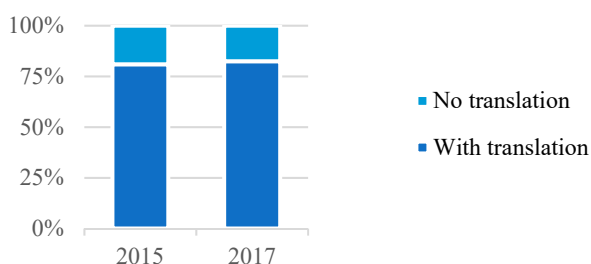


shareholders, and 4) 89.1% of companies with more than 30% foreign shareholders translating financial results (table 13, figure 13).

In terms of industries, 1) 87.0% of manufacturing companies, 2) 75.6% of service companies, and 3) 86.4% of financial companies translate their financial results. The proportion of companies translating their financial results in the financial industry increased significantly in 2017, approaching a level similar to that of the manufacturing industry (table 14, figure 14).

**Table 12** Number of companies creating English translations of financial results

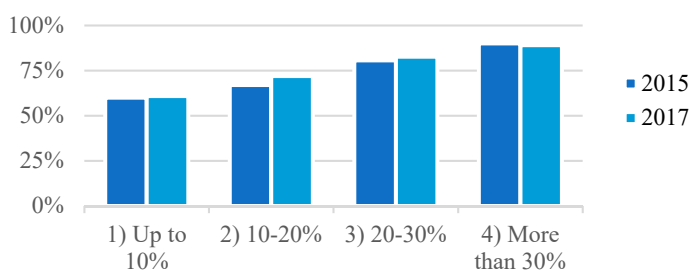
	2015		2017	
	Count	Percentage	Count	Percentage
With translation	323	(81.0%)	329	(82.3%)
No translation	76	(19.0%)	71	(17.7%)



**Figure 12** Rate of English translation of financial results

**Table 13** Rate of English translation of financial results by proportion of foreign shareholders

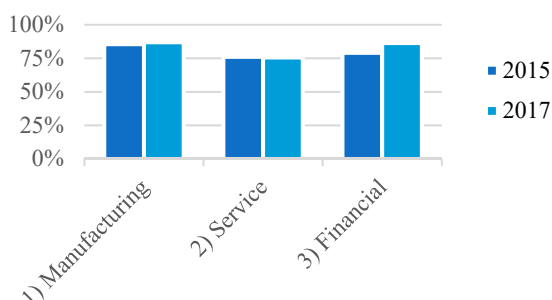
Proportion of foreign shareholders	2015		2017	
	Count	Percentage	Count	Percentage
1) Up to 10%	6/10	(60.0%)	14/23	(60.9%)
2) 10-20%	63/94	(67.0%)	54/75	(72.0%)
3) 20-30%	100/124	(80.7%)	105/127	(82.7%)
4) More than 30%	154/171	(90.1%)	156/175	(89.1%)
Total	323/399	(81.0%)	329/400	(82.3%)



**Figure 13** Rate of English translation of financial results by proportion of foreign shareholders

**Table 14 English translations of financial results by industry**

Industry	2015	2017
1) Manufacturing	165/193 (85.5%)	167/192 (87.0%)
2) Service	124/163 (76.1%)	124/164 (75.6%)
3) Financial	34/43 (79.1%)	38/44 (86.4%)
Total	323/399 (81.0%)	329/400 (82.3%)



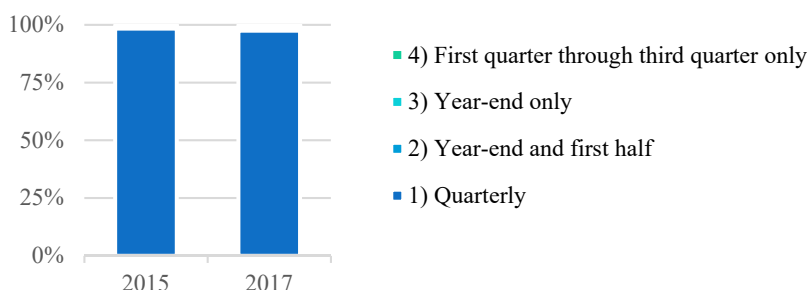
**Figure 14 English translations of financial results by industry**

**Frequency of translation**

We researched the frequency of translation of financial results based on four categories: 1) quarterly, 2) year-end and first half, 3) year-end only, and 4) from the first quarter to the third quarter only (table 15, figure 15). Of 329 companies providing English translations of their financial results, almost all (322 companies or 97.6%) do so on a quarterly basis, as in 2015.

**Table 15 Frequency of translation of financial results**

	2015		2017	
	(% of 323 companies with English translations)		(% of 329 companies with English translations)	
1) Quarterly	318	(98.5%)	322	(97.6%)
2) Year-end and first half	3	(0.9%)	4	(1.2%)
3) Year-end only	2	(0.6%)	2	(0.9%)
4) First quarter through third quarter only	0	(0%)	1	(0.3%)



**Figure 15 Frequency of translation of financial results**

**Scope of English translation**

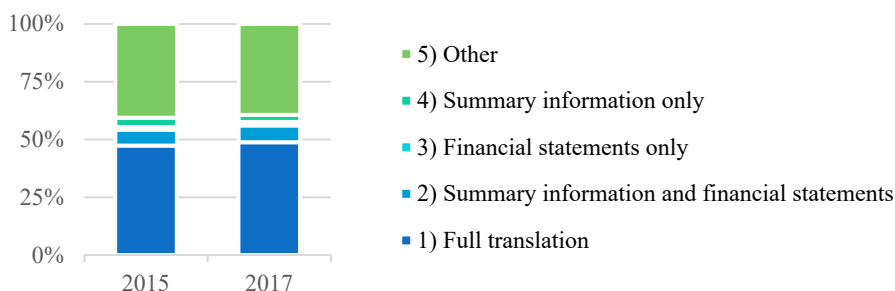
We researched the scope of English translation of year-end financial results based on five categories: 1) full

translation, 2) summary information and financial statements, 3) financial statements only, 4) summary information only, and 5) other (table 16, graph 16). One company created translations for each quarter except year-end (Stanley Electric Co., Ltd.), leaving us with 328 companies to analyze. Of these 328 companies, about half (160; 48.8%) provide a full translation. There are a certain number of companies that provide translations of summary information and financial statements, financial statements only, or summary information only, although the proportion of companies was less than 10% for each of these categories. Many companies (129; 39.3%) are classed as “other,” but classification is difficult owing to companies’ flexible approach to translation, such as companies that only omit qualitative information, and companies that omit the notes to financial statements but not segment information.

There are also many companies that provide a different scope of translation for year-end and quarterly financial results, such as companies that provide a full translation at year-end, but only a partial translation for quarterly releases. As a result, we also looked at the scope of English translation for quarterly financial results based on the same five categories: 1) full translation, 2) summary information and financial statements, 3) financial statements only, 4) summary information only, and 5) other (table 17, figure 17). Of the 327 companies providing English translations of quarterly financial results, 183 companies (56.0%) provided full translations, significantly higher than the proportion for year-end financial results (48.8%). This may be partly due to the fact that companies are increasingly reducing the amount of Japanese text in quarterly financial results, meaning less work is required to create English translations.

**Table 16 Scope of English translation of year-end financial results**

	2015		2017	
	(% of 323 companies with English translations)		(% of 328 companies with English translations)	
1) Full translation	153	(47.4%)	160	(48.8%)
2) Summary information and financial statements	22	(6.8%)	24	(7.3%)
3) Financial statements only	4	(1.2%)	5	(1.5%)
4) Summary information only	13	(4.0%)	10	(3.1%)
5) Other	131	(40.6%)	129	(39.3%)



**Figure 16 Scope of English translation of year-end financial results**

**Table 17 Scope of English translation of quarterly financial results**

	2017	
	(% of 327 companies with English translations)	
1) Full translation	183	(56.0%)
2) Summary information and financial statements	26	(8.0%)
3) Financial statements only	3	(0.9%)
4) Summary information only	10	(3.0%)
5) Other	105	(32.1%)

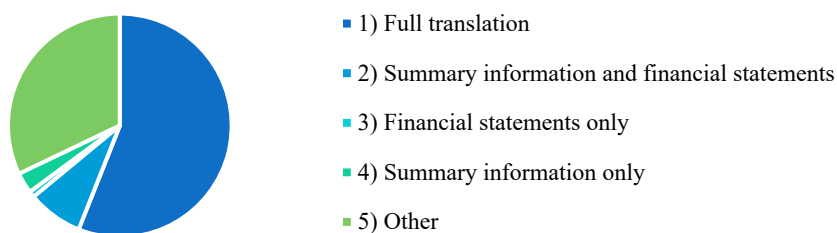


Figure 17 Scope of English translation of quarterly financial results

## 6. Presentation materials for earnings briefings

### Rate of English translation

Out of all 400 JPX-Nikkei 400 constituents, 329 companies translate presentation materials for earnings briefings, or 82.3%. Like proxy statements (88.0%) and financial results (82.3%), a high proportion of companies translate this type of document (table 18, figure 18).

The proportion of companies translating presentation materials is higher for companies with a higher proportion of foreign shareholders, with 1) 65.2% of companies with up to 10% foreign shareholders, 2) 81.3% of companies with 10-20% foreign shareholders, 3) 78.7% of companies with 20-30% foreign shareholders, and 4) 87.4% of companies with more than 30% foreign shareholders translating presentation materials (table 19, figure 19).

In terms of industries, 1) 82.8% of manufacturing companies, 2) 79.4% of service companies, and 3) 93.2% of financial companies translate presentation materials. The proportion of financial companies translating these materials was already high in 2015, but has still increased significantly in 2017 (table 20, figure 20).

Table 18 Number of companies creating English translations of earnings briefing presentation materials

	2015		2017	
With translation	312	(78.2%)	329	(82.3%)
No translation	87	(21.8%)	71	(17.7%)

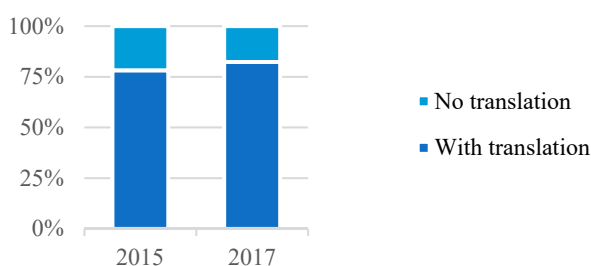
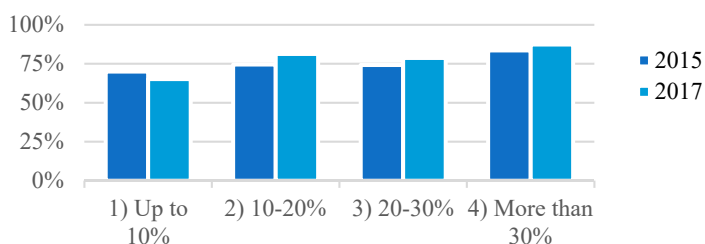


Figure 18 Rate of English translation of earnings briefing presentation materials

**Table 19** Rate of English translation of earnings briefing presentation materials by proportion of foreign shareholders

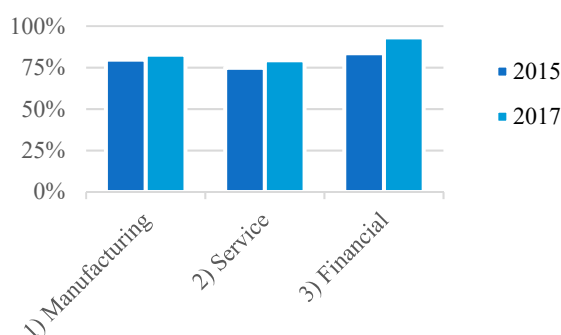
Proportion of foreign shareholders	2015		2017	
1) Up to 10%	7/10	(70.0%)	15/23	(65.2%)
2) 10-20%	70/94	(74.5%)	61/75	(81.3%)
3) 20-30%	92/124	(74.2%)	100/127	(78.7%)
4) More than 30%	143/171	(83.6%)	153/175	(87.4%)
<b>Total</b>	<b>312/399</b>	<b>(78.2%)</b>	<b>329/400</b>	<b>(82.3%)</b>



**Figure 19** Rate of English translation of earnings briefing presentation materials by proportion of foreign shareholders

**Table 20** English translations of earnings briefing presentation materials by industry

Industry	2015		2017	
1) Manufacturing	154/193	(79.8%)	159/192	(82.8%)
2) Service	122/163	(74.9%)	129/164	(79.4%)
3) Financial	36/43	(83.7%)	41/44	(93.2%)
<b>Total</b>	<b>312/399</b>	<b>(78.2%)</b>	<b>329/400</b>	<b>(82.3%)</b>



**Figure 20** English translations of earnings briefing presentation materials by industry

### Frequency of translation

We researched the frequency of translation of presentation materials for earnings briefings based on three categories, 1) quarterly, 2) year-end and first half, and 3) year-end only. Of 329 companies providing English translations, 246 (74.8%) do so on a quarterly basis (table 21, figure 21). Additionally, 75

companies provide Japanese-language presentation materials twice yearly, at year-end and the end of the first half, and of these 72 companies (96%) provide English translations twice yearly, while only three companies (4%) provide translations only at year-end.

Table 21 Frequency of translation of earnings briefing presentation materials

	2015 (% of 312 companies with English translations)		2017 (% of 329 companies with English translations)	
1) Quarterly	213	(68.3%)	246	(74.8%)
2) Year-end and first half	92	(29.5%)	76	(23.1%)
3) Year-end only	7	(2.2%)	7	(2.1%)

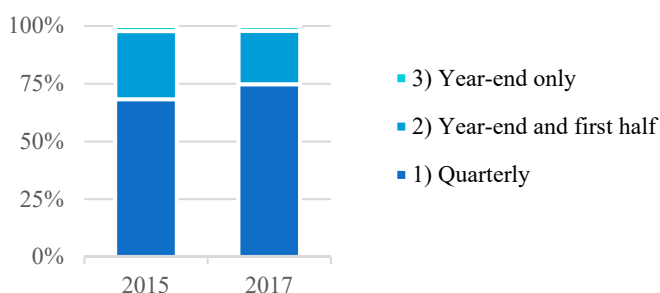


Figure 21 Frequency of translation of earnings briefing presentation materials

## 7. Duplication of information between documents and scope of disclosure

There is some duplication of content between the business report and financial statements in proxy statements for annual general meetings and financial results (*kessan tanshin*), so some companies translate the financial results, which are disclosed sooner and are focused on more by investors, and omit the business report and financial statements in proxy statements. In fact, SEC regulations require foreign companies listed in the US to translate information provided to shareholders into English and file it with EDGAR, but some Japanese companies listed in the US omit the translation of the business report, perhaps because the information is the same as that in financial results. Of the 165 companies that only translate the particulars and reference documents for proxy statements, 124 (75.2%) translate their financial results, and some of these may consider the translation of financial results as a replacement for the translation of the business report and financial statements.

Still, translating financial results does not cover all the important information in the business report and financial statements because the business report contains important information that is not usually included in financial results, such as information on officers, shareholders, subsidiaries, borrowing, and shares, and the notes to financial statements in financial results often have less information than notes to financial statements covered by the Companies Act. In recent years, companies have also been reducing the information in financial results in order to meet the demand for early disclosure, creating a more significant difference in the information contained in the financial results and the business report and financial statements. As a result, companies must check that there are no omissions in the scope of information covered by translations of proxy statements and financial results.

## 8. English translation of each type of document

If we arrange the five types of disclosure document in order of the proportion of companies translating them into English, the order would be as follows: 1) proxy statements 88.0%, 2) and 3) financial results (*kessan tanshin*) and earnings briefing and presentation materials, 82.3% each, 4) notices of resolutions, 48.0%, and 5) results of the exercise of voting rights (extraordinary reports), 24.3% (table 22, figure 22). Compared with 2015, it appears companies' focus has shifted from financial results and presentation materials, which

formerly played a central role in companies' investor relations activities, to more corporate governance-related documents, with significant increases of 19.8% and 11.8% in the proportion of companies translating their proxy statements and results of the exercise of voting rights, respectively.

Table 22 English translation by type of disclosure document

	2015		2017	
1) Proxy statement	272	(68.2%)	352	(88.0%)
2) Notice of resolutions	186	(46.6%)	192	(48.0%)
3) Results of the exercise of voting rights (extraordinary report)	50	(12.5%)	97	(24.3%)
4) Financial results	323	(81.0%)	329	(82.3%)
5) Presentation materials for earnings briefings	312	(78.2%)	329	(82.3%)

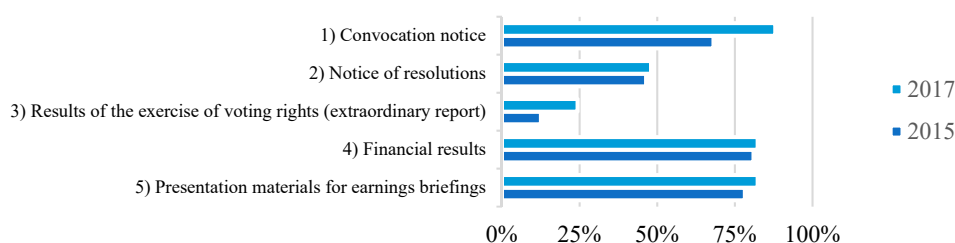


Figure 22 Rate of English translation by type of disclosure document

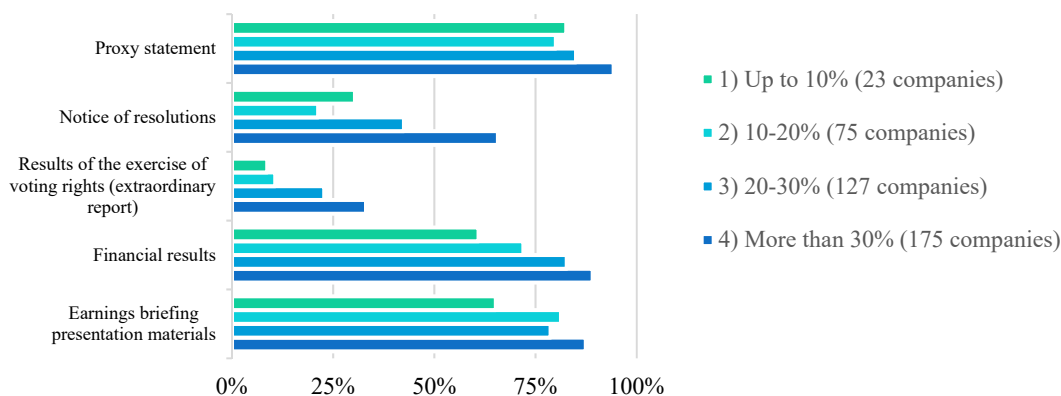
[%]

If we compare the English translation of different types of disclosure document by the proportion of foreign shareholders, we see that the proportion of companies creating translations is higher for companies with more foreign shareholders, for all types of disclosure document. We find a difference of 11.7pp in the proportion of companies translating their proxy statements between companies with a high proportion of foreign shareholders and companies with a low proportion of foreign shareholders. This is the smallest difference between companies with high and low proportions of foreign shareholders for any of the different types of disclosure document, and is notable for the fact that it has narrowed significantly from 2015, when the difference was 46.6pp. It appears this change has been partly driven by companies' recognition of the necessity of providing information on proposals directly to investors overseas, in addition to market participants' increasing focus on corporate governance in recent years and shareholder voting recommendations from voting service providers.

Financial results and presentation materials complement each other as highly time-sensitive disclosure documents, and the same proportion of the 400 companies we looked at translated each of these types of document (82.3%). Comparing these two types of document by the proportion of foreign shareholders, however, we find that many companies with less than 20% foreign shareholders translate their presentation materials, whereas more companies with more than 20% foreign shareholders translate their financial results. It appears companies with a relatively low proportion of foreign shareholders are focusing more on their presentation materials, perhaps because they want to use their translations to explain their business models, growth strategies, etc. to overseas investors, as this information is difficult to include in financial results releases.

**Table 23 English translation by proportion of foreign shareholders**

Proportion of foreign shareholders	Proxy statement	Notice of resolutions	Results of the exercise of voting rights (extraordinary report)	Financial results	Earnings briefing presentation materials
1) Up to 10% (23 companies)	19 (82.6%)	7 (30.4%)	2 (8.7%)	14 (60.9%)	15 (65.2%)
2) 10-20% (75 companies)	60 (80.0%)	16 (21.3%)	8 (10.7%)	53 (72.0%)	61 (81.3%)
3) 20-30% (127 companies)	108 (85.0%)	54 (42.5%)	29 (22.8%)	105 (82.7%)	100 (78.7%)
4) More than 30% (175 companies)	165 (94.3%)	115 (65.7%)	58 (33.1%)	156 (89.1%)	153 (87.4%)
<b>Total</b>	<b>352 (88.0%)</b>	<b>192 (48.0%)</b>	<b>97 (24.3%)</b>	<b>329 (82.3%)</b>	<b>329 (82.3%)</b>



**Figure 23 English translation by proportion of foreign shareholders**

If we compare the English of different types of disclosure document by the three types of industry classification (manufacturing, service, and financial), we see that the average proportion of companies providing translations across these five types of document is highest in the financial industry (73.2%), followed by the manufacturing industry (69.5%), then the service industry (57.6%). Companies in the financial industry may be actively focusing on translations of disclosure documents because they themselves are often investors, and it is particularly notable that the proportion of companies translating extraordinary reports on the results of the exercise of voting rights is high, whereas it is low in other industries. The proportion of companies in the manufacturing industry providing translations is relatively high compared with the service industry. This may be because many Japanese manufacturing companies operate businesses overseas and there is little resistance to English-language disclosure, whereas many companies in the service industry only operate domestic businesses, and there is no department or manager responsible for English language disclosure, meaning there tend to be greater barriers to English-language disclosure (table 24, figure 24).



Table 24 English translation by industry

Industry	Proxy statement	Notice of resolutions	Results of the exercise of voting rights (extraordinary report)	Financial results	Earnings briefing presentation materials
1) Manufacturing (192 companies)	178 (92.7%)	108 (56.3%)	55 (28.6%)	167 (87.0%)	159 (82.8%)
2) Service (164 companies)	133 (81.1%)	61 (37.2%)	24 (14.6%)	124 (75.6%)	129 (79.4%)
3) Financial (44 companies)	41 (93.2%)	23 (52.3%)	18 (40.9%)	38 (86.4%)	41 (93.2%)
<b>Total</b>	<b>352 (88.0%)</b>	<b>192 (48.0%)</b>	<b>97 (24.3%)</b>	<b>329 (82.3%)</b>	<b>329 (82.3%)</b>

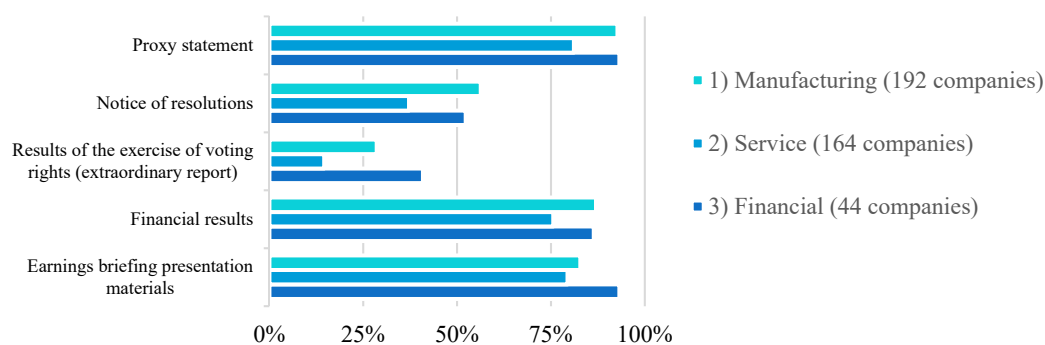


Figure 24 English translation by industry

## International Disclosure Services Corporation

International Disclosure Services Corporation specializes in supporting the disclosure of information for investors overseas, providing disclosure document translation services, research, and consulting services related to English-language disclosure. Inquiries related to this report and our services may be submitted through our website.

International Disclosure Services Corporation  
FORECAST SHINJUKU AVENUE 6F  
2-5-12 Shinjuku, Shinjuku-ku, Tokyo 160-0022, Japan  
Tel: +81-3-5363-5223  
<https://www.ids-corp.co.jp/>

Updated February 7, 2019

Company	Ticker	Industry	Foreign shareholders (%)	Proxy statement			Resolutions		Financial results			Earnings briefing presentation materials			
				Y/N	Scope	Map	Instructions on the exercise of voting rights	Notice of resolutions	Extraordinary report (results of exercise of voting rights)	Y/N	Frequency	Scope (Year-end)	Scope (Quarterly)	Y/N	Frequency (English)
Nippon Suisan Kaisha, Ltd.	1332	Fishery, Agriculture & Forestry	32	x				x	x	Quarterly	Other	Full translation		Year-end and first half	Year-end and first half
INPEX CORPORATION	1605	Mining	42.9	○	Full translation		x	○	○	Quarterly	Full translation	Full translation		Year-end and first half	Year-end and first half
HAZAMA ANDO CORPORATION	1719	Construction	38.3	x				x	x						
TOKYU CONSTRUCTION CO., LTD.	1720	Construction	13.9	○	Particulars and reference documents		x	—	x	x				x	
COMSYS Holdings Corporation	1721	Construction	16.7	○	Particulars and reference documents		x	x	x	Quarterly	Other	Other		Year-end and first half	Year-end and first half
TAISEI CORPORATION	1801	Construction	32.1	○	Full translation		x	○	○	Quarterly	Other	Other		Quarterly	Quarterly
OBAYASHI CORPORATION	1802	Construction	37.8	○	Particulars and reference documents		x	○	○	Quarterly	Other	Other		Year-end and first half	Year-end and first half
SHIMIZU CORPORATION	1803	Construction	22.9	○	Full translation		x	x	x	Quarterly	Other	Other			
HASEKO CORPORATION	1808	Construction	45.5	○	Other		x	○	○	x				Quarterly	Quarterly
KAJIMA CORPORATION	1812	Construction	28.5	○	Particulars and reference documents		x	○	○	Quarterly	Other	Other		Quarterly	Quarterly
Sumitomo Mitsui Construction Co., Ltd.	1821	Construction	15.8	○	Particulars and reference documents		x	○	x	x				x	
MAEDA CORPORATION	1824	Construction	26.8	x				x	x	x				x	
TODA CORPORATION	1860	Construction	27.3	x					x	Quarterly	Other	Other		Year-end and first half	Year-end and first half
Kumagai Gumi Co., Ltd.	1861	Construction	28.8	○	Other		x	○	x	Quarterly	Other	Other		x	
DAITO TRUST CONSTRUCTION CO., LTD.	1878	Construction	56.2	○	Other		x	x	○	Quarterly	Other	Other		Quarterly	Quarterly
NIPPO CORPORATION	1881	Construction	24.9	○	Particulars and reference documents		x	—	○	x				x	
MAEDA ROAD CONSTRUCTION Co., Ltd.	1883	Construction	33.7	○	Particulars and reference documents		x	x	x	Quarterly	Full translation	Full translation		x	
PENTA-OCEAN CONSTRUCTION CO., LTD.	1893	Construction	27.7	○	Particulars and reference documents		x	○	○	Quarterly	Other	Other		Year-end only	Quarterly
Sumitomo Forestry Co., Ltd.	1911	Construction	22.7	○	Other		x	○	○	Quarterly	Full translation	Full translation		Quarterly	Quarterly
DAIWA HOUSE INDUSTRY CO., LTD.	1925	Construction	34.9	○	Particulars and reference documents		x	○	x	Quarterly	Full translation	Full translation		Quarterly	Quarterly
Sekisui House Ltd.	1928	Construction	29.5	○	Full translation		x	○	○	Quarterly	Full translation	Full translation		Quarterly	Quarterly
KYOWA EXEO CORPORATION	1951	Construction	24.3	○	Particulars and reference documents		x	x	x	Year-end only	Summary information and financial statements	Full translation		Year-end and first half	Year-end and first half
Kyudenko Corporation	1959	Construction	20.5	○	Particulars and reference documents		x	x	x	x				x	
m&I, Inc.	2121	Services	-	x					x	Quarterly	Other	Other		Quarterly	Quarterly
Nihon M&A Center Inc.	2127	Services	42.9	○	Particulars and reference documents		x	x	x	x				Quarterly	Quarterly
PERSOL HOLDINGS CO., LTD.	2181	Services	35.1	○	Particulars and reference documents		x	x	○	Quarterly	Summary information and financial statements	Full translation		Quarterly	Quarterly
Ezaki Glico Co., Ltd.	2206	Foods	18.1	○	Particulars and reference documents		x	x	x	Quarterly	Other	Other		x	
CALBEE, Inc.	2229	Foods	45.7	○	Particulars and reference documents		x	x	x	Quarterly	Full translation	Full translation		Quarterly	Quarterly
YAKULT HONSHA CO., LTD.	2267	Foods	29.5	○	Particulars and reference documents		x	x	x	x				x	
Meiji Holdings Co., Ltd.	2269	Foods	25.1	○	Particulars and reference documents		x	○	○	Quarterly	Full translation	Full translation		Year-end and first half	Year-end and first half
NH Foods Ltd.	2282	Foods	32.1	○	Full translation		x	x	○	Quarterly	Other	Other		Quarterly	Quarterly
NS Solutions Corporation	2327	Information & Communication	14.3	x					x	Quarterly	Summary information and financial statements	Summary information and financial statements		Quarterly	Quarterly
SOHGO SECURITY SERVICES CO., LTD.	2331	Services	18.6	x					x	Quarterly	Full translation	Summary information and financial statements		Year-end and first half	Year-end and first half
Ichigo Inc.	2337	Real Estate	71.4	○	Full translation		x	○	x	Quarterly	Other	Summary information and financial statements		Quarterly	Quarterly
Kakaku.com, Inc.	2371	Services	39.1	○	Full translation		x	○	x	Quarterly	Full translation	Full translation		Quarterly	Quarterly
DIP Corporation	2379	Services	22.9	○	Particulars and reference documents		x	x	x	Quarterly	Full translation	Summary information only		Quarterly	Quarterly
M3, Inc.	2413	Services	-	x					x	Quarterly	Other	Other		Quarterly	Quarterly
DENA Co., Ltd.	2432	Services	29	○	Particulars and reference documents		x	○	○	Quarterly	Full translation	Full translation		Quarterly	Quarterly
HAKUHODO DY HOLDINGS INCORPORATED	2433	Services	15.7	○	Particulars and reference documents		x	○	x	Quarterly	Financial statements only	Financial statements only		Quarterly	Quarterly
Asahi Group Holdings, Ltd.	2502	Foods	26.6	○	Full translation		x	○	x	Quarterly	Other	Other		Quarterly	Quarterly
Kim Holdings Company Limited	2503	Foods	32.7	○	Full translation		x	x	○	Quarterly	Full translation	Full translation		Quarterly	Quarterly
Santory Beverage & Food Limited	2587	Foods	25.2	○	Full translation		x	x	○	Quarterly	Full translation	Full translation		Quarterly	Quarterly
Lawson, Inc.	2651	Retail Trade	20.2	○	Full translation		x	x	x	Quarterly	Full translation	Full translation		Year-end and first half	Year-end and first half
ABC-MART, INC.	2670	Retail Trade	22.9	○	Particulars and reference documents		x	—	x	Quarterly	Summary information and financial statements	Summary information and financial statements		x	
Adastria Co., Ltd.	2685	Retail Trade	22.7	○	Particulars and reference documents		x	x	x	Quarterly	Full translation	Full translation		Year-end and first half	Quarterly
Sajitz Corporation	2788	Wholesale Trade	45.7	○	Full translation		○	○	○	Quarterly	Other	Other		Quarterly	Quarterly
Seris Co., Ltd.	2782	Retail Trade	30.5	x					x					x	
Alfresa Holdings Corporation	2784	Wholesale Trade	28.9	○	Full translation		x	○	x	Quarterly	Summary information and financial statements	Summary information and financial statements		Quarterly	Quarterly
KIKKOMAN CORPORATION	2801	Foods	14.6	○	Other		x	x	x	Quarterly	Other	Other		Year-end and first half	Year-end and first half
Ajinomoto Co., Inc.	2802	Foods	27.3	○	Full translation		x	○	x	Quarterly	Full translation	Full translation		Year-end and first half	Year-end and first half
Kewpie Corporation	2809	Foods	9.1	○	Other		x	○	○	Quarterly	Other	Other		Year-end and first half	Year-end and first half
NICHIREI CORPORATION	2871	Foods	19.1	○	Particulars and reference documents		x	x	x	Quarterly	Other	Other		Quarterly	Quarterly
TOYO SUISAN KAISHA, LTD.	2875	Foods	43.9	○	Particulars and reference documents		x	x	x	Quarterly	Other	Full translation		x	
NISSIN FOODS HOLDINGS CO., LTD.	2897	Foods	16.4	○	Full translation		x	○	○	Quarterly	Other	Other		Year-end and first half	Year-end and first half

Company	Ticker	Industry	Foreign shareholders (%)	Proxy statement			Resolutions		Financial results			Earnings briefing presentation materials				
				Y/N	Scope	Map	Instructions on the exercise of voting rights	Notice of resolutions	Extraordinary report (results of exercise of voting rights)	Y/N	Frequency	Scope (Year-end)	Scope (Quarterly)	Y/N	Frequency (English)	Frequency (Japanese)
JT	2914	Foods	30.9	○	Full translation	×	○	×	×	○	Quarterly	Full translation	Full translation	○	Quarterly	Quarterly
Halic Co., Ltd.	3003	Real Estate	16.6	○	Particulars and reference documents	×	×	×	×	○	Quarterly	Other	Full translation	○	Quarterly	Quarterly
Kobebussan Co., Ltd.	3038	Wholesale Trade	2.9	×				×	×	×				×	Year-end and first half	
BICCAMEA INC.	3048	Retail Trade	7.1	○	Particulars and reference documents	×	○	×	×	○	Quarterly	Other	Other	○	Year-end and first half	Year-end and first half
MonotoRO Co., Ltd.	3064	Retail Trade	77.5	×				×	×	○	Quarterly	Other	Summary information and financial statements	○	Quarterly	Quarterly
J.FRONT RETAILING Co., Ltd.	3086	Retail Trade	19.7	○	Full translation	×	○	×	×	○	Quarterly	Other	Full translation	○	Year-end and first half	Year-end and first half
Matsumotokyoshi Holdings Co., Ltd.	3088	Retail Trade	35.8	○	Particulars and reference documents	×	×	×	×	×				×		
START TODAY CO., LTD.	3092	Retail Trade	41.6	○	Other	×	—	○	×	×				○	Quarterly	Quarterly
TOYOTA BOSHOKU CORPORATION	3116	Transportation Equipment	11.2	○	Particulars and reference documents	×	×	×	×	○	Quarterly	Other	Other	○	Quarterly	Quarterly
WELCIA HOLDINGS CO., LTD.	3141	Retail Trade	15.8	×				×	×	×				○	Quarterly	Quarterly
CREATESD HOLDINGS CO., LTD	3148	Retail Trade	20.3	×				×	×	×				○	Year-end and first half	Year-end and first half
Nomura Real Estate Holdings, Inc.	3231	Real Estate	33.1	○	Full translation	×	○	○	×	○	Quarterly	Full translation	Full translation	○	Quarterly	Quarterly
Pressance Corporation Co., Ltd.	3254	Real Estate	29.6	○	Particulars and reference documents	×	×	×	×	○	Quarterly	Other	Other	○	Quarterly	Quarterly
OPENHOUSE CO., LTD.	3288	Real Estate	27.4	○	Particulars and reference documents	×	○	×	○	○	Quarterly	Other	Full translation	○	Quarterly	Quarterly
Tokyu Fudosan Holdings Corporation	3289	Real Estate	26.6	○	Particulars and reference documents	×	×	○	○	○	Quarterly	Other	Other	○	Quarterly	Quarterly
Iida Group Holdings Co., Ltd.	3291	Real Estate	21.1	×				×	×	○	Quarterly	Summary information and financial statements	Summary information and financial statements	○	Quarterly	Quarterly
COSMOS Pharmaceutical Corporation	3349	Retail Trade	28.1	×				×	×	×				×		
SHIP HEALTHCARE HOLDINGS, INC.	3360	Wholesale Trade	42.2	○	Particulars and reference documents	×	×	×	×	○	Quarterly	Other	Full translation	×		
Seven & I Holdings Co., Ltd.	3382	Retail Trade	34.7	○	Full translation except auditor's report	×	○	×	×	○	Quarterly	Other	Other	○	Quarterly	Quarterly
TSURUHA HOLDINGS INC.	3391	Retail Trade	44.6	○	Particulars and reference documents	×	×	×	×	○	Quarterly	Other	Full translation	×		
TEJIN LIMITED	3401	Textiles and Apparels	35.9	○	Other	×	×	○	○	○	Quarterly	Other	Other	○	Quarterly	Quarterly
TORAY INDUSTRIES, INC.	3402	Textiles and Apparels	28.9	○	Full translation	×	○	○	○	○	Quarterly	Other	Other	○	Quarterly	Quarterly
KURARAY CO., LTD.	3405	Chemicals	34.5	○	Other	×	×	○	×	○	Quarterly	Full translation	Full translation	○	Year-end and first half	Year-end and first half
ASAHI KASEI CORPORATION	3407	Chemicals	36.5	○	Other	×	○	○	×	○	Quarterly	Other	Other	○	Quarterly	Quarterly
KUSURI NO AOKI HOLDINGS CO., LTD.	3549	Retail Trade	14.3	×				×	×	×				×		
NEXON Co., Ltd.	3659	Information & Communication	90.8	○	Full translation	○	○	○	×	○	Quarterly	Full translation	Full translation	○	Quarterly	Quarterly
COLOPL, Inc.	3668	Information & Communication	11.9	○	Full translation	×	○	○	×	×				○	Quarterly	Quarterly
T-Gaia Corporation	3738	Information & Communication	11.1	○	Full translation	×	○	○	○	○	Quarterly	Full translation	Full translation	○	Quarterly	Quarterly
GangHo Online Entertainment, Inc.	3765	Information & Communication	9.5	○	Full translation	×	—	○	×	○	Quarterly	Full translation	Full translation	○	Quarterly	Quarterly
Oji Holdings Corporation	3861	Pulp and Paper	23.2	○	Full translation	×	○	×	×	○	Quarterly	Other	Other	○	Year-end and first half	Year-end and first half
Daio Paper Corporation	3880	Pulp and Paper	5.6	○	Particulars and reference documents	×	×	×	×	○	Quarterly	Summary information and financial statements	Summary information and financial statements	○	Quarterly	Quarterly
Sumitomo Chemical Co., Ltd.	4005	Chemicals	33	○	Full translation except auditor's report	×	×	×	×	○	Quarterly	Other	Other	○	Quarterly	Quarterly
Nissan Chemical Industries, Ltd.	4021	Chemicals	24.1	○	Particulars and reference documents	×	×	×	×	○	Quarterly	Full translation	Full translation	○	Quarterly	Quarterly
TOSOH CORPORATION	4042	Chemicals	32.3	○	Particulars and reference documents	×	○	○	×	×				×		
Denka Company Limited	4061	Chemicals	29.5	○	Full translation	×	○	×	×	○	Quarterly	Summary information only	Summary information only	×	Year-end and first half	Year-end and first half
Shin-Etsu Chemical Co., Ltd.	4063	Chemicals	39.3	○	Full translation	×	○	○	○	○	Quarterly	Full translation	Full translation	○	Year-end and first half	Year-end and first half
AIR WATER INC.	4088	Chemicals	26.1	×				×	×	×				×		
TATYO NIPPON SANSO CORPORATION	4091	Chemicals	8.3	○	Particulars and reference documents	×	○	×	×	○	Quarterly	Other	Other	○	Quarterly	Quarterly
NHON PARKERIZING CO., LTD.	4095	Chemicals	23.3	×				×	×	○	Quarterly	Summary information only	Summary information only	○	Year-end only	Year-end only
Kyowa Hakkō Kairi Co., Ltd.	4151	Pharmaceutical	12.5	○	Particulars and reference documents	×	×	×	×	○	Quarterly	Other	Full translation	○	Quarterly	Quarterly
MITSUBISHI GAS CHEMICAL COMPANY, INC.	4182	Chemicals	33.6	○	Full translation	×	×	○	×	○	Quarterly	Other	Other	○	Year-end and first half	Year-end and first half
Mitsui Chemicals, Inc.	4183	Chemicals	34.9	○	Other	×	○	○	○	○	Quarterly	Other	Other	○	Quarterly	Quarterly
JSR CORPORATION	4185	Chemicals	42.5	○	Full translation	×	○	○	○	○	Quarterly	Full translation	Full translation	○	Quarterly	Quarterly
Mitsubishi Chemical Holdings Corporation	4188	Chemicals	32.5	○	Full translation	×	○	○	○	○	Quarterly	Other	Other	○	Quarterly	Quarterly
Daicel Corporation	4202	Chemicals	32.9	○	Particulars and reference documents	×	×	×	×	○	Quarterly	Other	Other	○	Quarterly	Quarterly
Seikisui Chemical Co., Ltd.	4204	Chemicals	37.9	○	Particulars and reference documents	×	×	○	○	○	Quarterly	Other	Other	○	Quarterly	Quarterly
ZEON CORPORATION	4205	Chemicals	20.3	○	Particulars and reference documents	×	×	×	×	○	Quarterly	Other	Other	○	Quarterly	Quarterly
Aka Kogyo Company, Limited	4206	Chemicals	26.1	×				×	×	○	Quarterly	Summary information and financial statements	Summary information and financial statements	×	Year-end and first half	Year-end and first half
Ube Industries, Ltd.	4208	Chemicals	31.7	○	Particulars and reference documents	×	○	○	×	○	Quarterly	Other	Other	○	Quarterly	Quarterly
Htachi Chemical Company, Ltd.	4217	Chemicals	27.2	○	Particulars and reference documents	○	○	×	×	○	Quarterly	Other	Other	○	Quarterly	Quarterly
DaikyoNishikawa Corporation	4246	Chemicals	24.1	○	Particulars and reference documents	×	—	×	×	○	Quarterly	Summary information only	Summary information only	×	Year-end only	Year-end only
NIPPON KAYAKU CO., LTD.	4272	Chemicals	15.9	○	Particulars and reference documents	×	○	○	×	○	Quarterly	Other	Full translation	○	Quarterly	Quarterly
Nomura Research Institute, Ltd.	4307	Information & Communication	25.7	○	Particulars and reference documents	×	×	×	×	○	Quarterly	Other	Other	○	Quarterly	Quarterly
NOF CORPORATION	4403	Chemicals	22.9	○	Particulars and reference documents	×	○	×	×	×				×		Year-end and first half

Company	Ticker	Industry	Foreign shareholders (%)	Proxy statement			Resolutions		Financial results			Earnings briefing presentation materials			
				Y/N	Scope	Map	Instructions on the exercise of voting rights	Notice of resolutions	Extraordinary report (results of exercise of voting rights)	Y/N	Frequency	Scope (Year-end)	Scope (Quarterly)	Y/N	Frequency (English)
Kao Corporation	4452	Chemicals	43.9	Other		x	x	o	o	Quarterly	Full translation	Full translation	o	Quarterly	Quarterly
Takeda Pharmaceutical Company Limited	4502	Pharmaceutical	29.3	Full translation		x	o	o	o	Quarterly	Full translation	Full translation	o	Quarterly	Quarterly
Astellas Pharma Inc.	4503	Pharmaceutical	49.2	Full translation		x	o	o	o	Quarterly	Other	Other	o	Quarterly	Quarterly
Sumitomo Dainippon Pharma Co., Ltd.	4506	Pharmaceutical	12.8	Full translation		x	o	x	x	Quarterly	Full translation	Other	o	Quarterly	Quarterly
Shionogi & Co. Ltd.	4507	Pharmaceutical	39.3	Full translation		x	o	o	o	Quarterly	Full translation	Full translation	o	Quarterly	Quarterly
Mitsubishi Tanabe Pharma Corporation	4508	Pharmaceutical	18.7	Other		x	x	o	o	Quarterly	Full translation	Full translation	o	Quarterly	Quarterly
CHUGAI PHARMACEUTICAL CO., LTD.	4519	Pharmaceutical	76.5	Full translation		x	x	o	o	Quarterly	Full translation	Full translation	o	Quarterly	Quarterly
KAKEN PHARMACEUTICAL CO., LTD.	4521	Pharmaceutical	26.5	Particulars and reference documents		x	-	x	x	Quarterly	Summary information and financial statements	Summary information and financial statements	x		Year-end and first half
Eisai Co., Ltd.	4523	Pharmaceutical	27.4	Full translation		x	o	o	o	Quarterly	Full translation	Full translation	o	Quarterly	Quarterly
ONO PHARMACEUTICAL CO., LTD.	4528	Pharmaceutical	21.5	Particulars and reference documents		x	x	o	x	Quarterly	Other	Other	x		
HISAMITSU PHARMACEUTICAL CO., INC.	4530	Pharmaceutical	11.8	Particulars and reference documents		x	-	x	x				o	Quarterly	Quarterly
SANTEN PHARMACEUTICAL CO., LTD.	4536	Pharmaceutical	43.2	Other		x	x	o	o	Quarterly	Other	Other	o	Quarterly	Quarterly
TSUMURA & CO.	4540	Pharmaceutical	36.8	Particulars and reference documents		x	x	o	x	Quarterly	Other	Other	o	and first half	Year-end and first half
TERUMO CORPORATION	4543	Precision Instruments	27	Full translation except auditor's report		x	x	o		Quarterly	Other	Other	o	Quarterly	Quarterly
SAWAI PHARMACEUTICAL CO., LTD.	4555	Pharmaceutical	32.6	Particulars and reference documents		x	o	x	x				o	Quarterly	Quarterly
DAICHI SANKYO COMPANY LIMITED	4568	Pharmaceutical	27.7	Full translation		x	o	o	o	Quarterly	Full translation	Full translation	o	Quarterly	Quarterly
Osuka Holdings Co. Ltd.	4578	Pharmaceutical	25.8	Full translation		x	o	x	x	Quarterly	Full translation	Full translation	o	Quarterly	Quarterly
NIPPON PAINT HOLDINGS CO., LTD.	4612	Chemicals	56.8	Particulars and reference documents		x	o	o	x	Quarterly	Full translation	Full translation	o	Quarterly	Quarterly
KANSAI PAINT CO., LTD.	4613	Chemicals	30.1	Particulars and reference documents		x	x	x	x				o	Year-end and first half	Year-end and first half
DIC Corporation	4631	Chemicals	27.5	Full translation		x	o	x	x	Quarterly	Other	Other	o	Quarterly	Quarterly
ORIENTAL LAND CO., LTD.	4661	Services	9.7	Particulars and reference documents		x	x	o	x	Quarterly	Other	Full translation	o	and first half	Year-end and first half
PARK24 Co., Ltd.	4666	Real Estate	35.8	Particulars and reference documents		x	x	o	x	Quarterly	Full translation	Full translation	o	and first half	Year-end and first half
RESORT TRUST, INC.	4681	Services	19.6	x				x	x	Quarterly	Other	Other	o	Quarterly	Quarterly
OBIC Co., Ltd.	4684	Information & Communication	35.1	Particulars and reference documents		x	x	x	x				x		
Yahoo Japan Corporation	4689	Information & Communication	47	Particulars and reference documents		x	x	o	x	Quarterly	Full translation	Full translation	o	Quarterly	Quarterly
Trend Micro Incorporated	4704	Information & Communication	49.9	Full translation		x	o	x	x	Quarterly	Full translation	Full translation	o	Quarterly	Quarterly
ORACLE CORPORATION JAPAN	4716	Information & Communication	88.3	Full translation		x	o	x	x	Quarterly	Full translation	Full translation	o	Year-end only	Year-end only
USS Co., Ltd.	4732	Services	36.2	Full translation except auditor's report		△	o	x	x	Quarterly	Summary information and financial statements	Summary information and financial statements	o	Quarterly	Quarterly
ITOCHU Techno-Solutions Corporation	4739	Information & Communication	15.7	Particulars and reference documents		x	o	x	x	Quarterly	Full translation	Full translation	o	Year-end and first half	Quarterly
CyberAgent, Inc.	4751	Services	52.3	Particulars and reference documents		x	x	o	x	Quarterly	Full translation	Full translation	o	Quarterly	Quarterly
Rakuten, Inc.	4755	Services	36.1	Other		x	o	o	o	Quarterly	Other	Full translation	o	Quarterly	Quarterly
OTSUKA CORPORATION	4768	Information & Communication	27.3	x				x	x	Quarterly	Summary information and financial statements	Summary information and financial statements	o	Quarterly	Quarterly
KONICA MINOLTA, INC.	4902	Electric Appliances	37.3	Full translation		x	o	o	o	Quarterly	Full translation	Full translation	o	Quarterly	Quarterly
Shiseido Company Limited	4911	Chemicals	37.3	Full translation		x	x	o	o	Quarterly	Full translation	Full translation	o	Quarterly	Quarterly
Lion Corporation	4912	Chemicals	25.6	Particulars and reference documents		x	o	o	x	Quarterly	Other	Full translation	o	Quarterly	Quarterly
KOSE Corporation	4922	Chemicals	36	Particulars and reference documents		x	o	o	x	Quarterly	Full translation	Full translation	o	and first half	Year-end and first half
Ciz Holdings Co., Ltd.	4924	Chemicals	32.7	x				x	x	Quarterly	Summary information and financial statements	Full translation	o	Quarterly	Quarterly
KOBAYASHI PHARMACEUTICAL CO., LTD.	4967	Chemicals	21.7	Other		x	x	x	x	Quarterly	Other	Full translation	o	Year-end and first half	Year-end and first half
The Yokohama Rubber Company Limited	5101	Rubber Products	18	Particulars and reference documents		x	x	x	x				x		
Toyo Tire & Rubber Co., Ltd.	5105	Rubber Products	38.2	Particulars and reference documents		x	x	x	x	Quarterly	Other	Other	o	Quarterly	Quarterly
BRIDGESTONE CORPORATION	5108	Rubber Products	29.6	Particulars and reference documents		x	o	o	x	Quarterly	Full translation	Full translation	o	Quarterly	Quarterly
Sumitomo Rubber Industries, Ltd.	5110	Rubber Products	32.5	Full translation		x	o	o	o	Quarterly	Full translation	Full translation	o	Quarterly	Quarterly
Asahi Glass Company Limited	5201	Glass and Ceramics Products	27.5	Full translation		x	o	o	o	Quarterly	Full translation	Full translation	o	Quarterly	Quarterly
Sumitomo Osaka Cement Co., Ltd.	5232	Glass and Ceramics Products	34.2	Particulars and reference documents		x	x	x	x	Year-end and first half	Other	Other	x		Year-end and first half
TAIHEYO CEMENT CORPORATION	5233	Glass and Ceramics Products	39.2	Full translation		x	x	o	x	Quarterly	Other	Other	o	and first half	Year-end and first half
TOTO LTD.	5332	Glass and Ceramics Products	23.6	Particulars and reference documents		x	o	o	o	Quarterly	Full translation	Full translation	o	Quarterly	Quarterly
NGK INSULATORS, LTD.	5333	Glass and Ceramics Products	26.1	Particulars and reference documents		x	x	x	x	Quarterly	Full translation	Other	o	Year-end and first half	Year-end and first half
NGK SPARK PLUG CO., LTD.	5334	Glass and Ceramics Products	32.4	Particulars and reference documents		x	x	o	x	Quarterly	Other	Other	o	and first half	Year-end and first half
NIPPON STEEL & SUMITOMO METAL CORPORATION	5401	Iron and Steel	24.4	Full translation		x	o	o	o	Quarterly	Full translation	Full translation	o	Quarterly	Quarterly
JFE Holdings, Inc.	5411	Iron and Steel	28	Full translation		x	o	o	o	Quarterly	Full translation	Full translation	o	Quarterly	Quarterly
TOKYO STEEL CO., LTD.	5423	Iron and Steel	31.3	x				x	x				x		
Hatchi Metals, Ltd.	5486	Iron and Steel	23.9	Full translation		x	o	x	x	Quarterly	Full translation	Other	o	Quarterly	Quarterly
Nippon Light Metal Holdings Company, Ltd.	5703	Nonferrous Metals	27.6	Particulars and reference documents		x	x	o	o	Quarterly	Summary information only	Summary information and financial statements	o	Year-end and first half	Year-end and first half
Mitsubishi Materials Corporation	5711	Nonferrous Metals	26.9	Other		x	x	o	x	Quarterly	Other	Full translation	o	Quarterly	Quarterly
Sumitomo Metal Mining Co., Ltd.	5713	Nonferrous Metals	31.1	Particulars and reference documents		x	o	o	o	Quarterly	Full translation	Full translation	o	and first half	Year-end and first half



Company	Ticker	Industry	Foreign shareholders (%)	Proxy statement			Resolutions		Financial results			Earnings briefing presentation materials					
				Y/N	Scope	Map	Instructions on the exercise of voting rights	Notice of resolutions	Extraordinary report (results of exercise of voting rights)	Y/N	Frequency	Scope (Year-end)	Scope (Quarterly)	Y/N	Frequency (English)	Frequency (Japanese)	
SYSMEX CORPORATION	6869	Electric Appliances	40.1	○	Particulars and reference documents	×	×	○	×	○	Quarterly	Full translation	Full translation	○	Quarterly	Quarterly	
Osara Group Inc.	6877	Electric Appliances	19.8	○	Particulars and reference documents	×	×	×	×	○	Quarterly	Summary information only	Summary information only	×			
DENSO CORPORATION	6902	Transportation Equipment	23.8	○	Full translation	○	×	○	○	○	Quarterly	Other	Other	○	Quarterly	Quarterly	
Stanley Electric Co.,Ltd.	6923	Electric Appliances	37.5	○	Particulars and reference documents	×	○	○	×	○	Q1-Q3のみ		Other		○	Year-end and first half	Year-end and first half
CASIO COMPUTER CO.,LTD.	6952	Electric Appliances	16.8	○	Particulars and reference documents	×	×	×	×	○	Quarterly	Other	Other	○	Quarterly	Quarterly	
FANUC CORPORATION	6954	Electric Appliances	53.9	○	Other	×	—	○	×	○	Quarterly	Full translation	Full translation	○	Quarterly	Quarterly	
HAMAMATSU PHOTONICS K.K.	6965	Electric Appliances	34.9	○	Other	×	○	×	×	○	Quarterly	Other	Other	×			
KYOCERA CORPORATION	6971	Electric Appliances	34	○	Full translation	×	×	○	○	○	Quarterly	Full translation	Full translation	○	Quarterly	Quarterly	
Murata Manufacturing Co.,Ltd.	6981	Electric Appliances	43.6	○	Full translation except auditor's report	×	○	○	×	○	Quarterly	Full translation	Full translation	○	Quarterly	Quarterly	
NITTO DENKO CORPORATION	6988	Chemicals	30.3	○	Full translation except auditor's report	×	○	○	×	○	Quarterly	Other	Full translation	Full translation	○	Quarterly	Quarterly
Mitsubishi Heavy Industries Ltd.	7011	Machinery	29.3	○	Full translation	×	○	○	×	○	Quarterly	Other	Other	○	Quarterly	Quarterly	
Kawasaki Heavy Industries Ltd.	7012	Transportation Equipment	23	○	Full translation	×	×	○	○	○	Quarterly	Full translation	Full translation	○	Quarterly	Quarterly	
Financial Products Group Co., Ltd.	7148	Securities and Commodities Futures	19.2	×				×	×	○	Quarterly	Summary information and financial statements	Summary information and financial statements	○	Quarterly	Quarterly	
ZENKOKU HOSHO Co., Ltd.	7164	Other Financing Business	35.3	○	Other	×	×	○	×	○	Quarterly	Full translation	Full translation	○	Quarterly	Quarterly	
Mebuki Financial Group, Inc.	7167	Banks	23.1	○	Particulars and reference documents	×	○	○	○	×				○	Quarterly	Quarterly	
Tokyo Kiraboshi Financial Group, Inc.	7173	Banks	17.1	○	Particulars and reference documents	×	×	×	×	○	Year-end and first half	Full translation	Full translation	○	Year-end and first half	Quarterly	
Kyushu Financial Group, Inc.	7180	Banks	14.5	○	Particulars and reference documents	×	×	×	×	×				○	Year-end only	Year-end and first half	
Concordia Financial Group, Ltd.	7186	Banks	32.7	○	Other	×	○	○	○	○	Quarterly	Summary information and financial statements	Summary information and financial statements	○	Quarterly	Quarterly	
NISSAN MOTOR CO.,LTD.	7201	Transportation Equipment	68.2	○	Full translation	×	—	○	×	○	Quarterly	Full translation	Full translation	○	Quarterly	Quarterly	
ISUZU MOTORS LIMITED	7202	Transportation Equipment	42.3	○	Full translation	×	○	○	×	○	Quarterly	Full translation	Full translation	○	Quarterly	Quarterly	
TOYOTA MOTOR CORPORATION	7203	Transportation Equipment	23.8	○	Full translation	×	○	○	○	○	Quarterly	Full translation	Full translation	○	Quarterly	Quarterly	
HINO MOTORS,LTD.	7205	Transportation Equipment	17.9	○	Particulars and reference documents	×	×	○	×	○	Quarterly	Full translation	Full translation	○	Quarterly	Quarterly	
NISSIN KOGYO CO., LTD.	7230	Transportation Equipment	21.2	○	Particulars and reference documents	×	×	×	×	×				×			
NOK CORPORATION	7240	Transportation Equipment	42.8	○	Full translation	×	—	×	×	○	Quarterly	Full translation	Full translation	○	Year-end and first half	Year-end and first half	
AISIN SEIKI CO.,LTD.	7259	Transportation Equipment	22.2	○	Particulars and reference documents	×	×	×	×	○	Quarterly	Other	Other	○	Quarterly	Quarterly	
Mazda Motor Corporation	7261	Transportation Equipment	40.7	○	Full translation	×	×	○	×	○	Quarterly	Full translation	Full translation	○	Quarterly	Quarterly	
HONDA MOTOR CO.,LTD.	7267	Transportation Equipment	40.1	○	Full translation	×	×	○	○	○	Quarterly	Other	Other	○	Quarterly	Quarterly	
SUZUKI MOTOR CORPORATION	7269	Transportation Equipment	33.3	○	Full translation	×	○	○	×	○	Quarterly	Full translation	Other	○	Quarterly	Quarterly	
SUBARU CORPORATION	7270	Transportation Equipment	33.9	○	Particulars and reference documents	×	×	○	○	○	Quarterly	Full translation	Full translation	○	Quarterly	Quarterly	
Yamaha Motor Co.,Ltd.	7272	Transportation Equipment	31	○	Full translation	×	○	○	×	○	Quarterly	Full translation	Other	○	Quarterly	Quarterly	
KOITO MANUFACTURING CO.,LTD.	7276	Electric Appliances	31.1	○	Full translation	×	×	×	×	○	Quarterly	Full translation	Full translation	○	Year-end and first half	Year-end and first half	
mitsuba Corporation	7280	Electric Appliances	14.3	×				×	×	×				○	Year-end only	Year-end and first half	
TOYODA GOSEI CO.,LTD.	7282	Transportation Equipment	20.5	○	Particulars and reference documents	×	×	×	×	○	Quarterly	Other	Other	○	Quarterly	Quarterly	
SHIMANO INC.	7309	Transportation Equipment	44.1	○	Full translation	×	○	×	×	○	Quarterly	Full translation	Full translation	×			
TS TECH CO.,LTD.	7313	Transportation Equipment	24.1	○	Particulars and reference documents	×	×	×	×	○	Quarterly	Full translation	Full translation	○	Year-end and first half	Year-end and first half	
Nojima Corporation	7419	Retail Trade	12.2	×				×	×	○	Quarterly	Full translation	Full translation	×			
RYOHIN KEIKAKU CO.,LTD.	7453	Retail Trade	50.7	○	Particulars and reference documents	×	○	×	×	×				○	Year-end and first half	Year-end and first half	
DAIICHIKOSHO CO.,LTD.	7458	Wholesale Trade	27	○	Particulars and reference documents	×	×	×	×	○	Quarterly	Other	Other	×			
MEDIPAL HOLDINGS CORPORATION	7459	Wholesale Trade	28	○	Particulars and reference documents	×	○	×	×	○	Quarterly	Full translation	Full translation	○	Quarterly	Quarterly	
Don Quijote Holdings Co.,Ltd.	7532	Retail Trade	72.1	○	Particulars and reference documents	×	×	×	×	○	Quarterly	Other	Other	○	Quarterly	Quarterly	
UNITED ARROWS LTD.	7606	Retail Trade	28	○	Particulars and reference documents	×	×	×	×	○	Quarterly	Summary information and financial statements	Summary information and financial statements	○	Quarterly	Quarterly	
SUGI HOLDINGS Co.,LTD.	7649	Retail Trade	35.2	×				×	×	×				×			
SHIMADZU CORPORATION	7701	Precision Instruments	29.7	○	Particulars and reference documents	×	○	○	×	○	Quarterly	Other	Other	○	Quarterly	Quarterly	
Olympus Corporation	7733	Precision Instruments	43.4	○	Full translation	×	○	○	×	○	Quarterly	Full translation	Full translation	○	Quarterly	Quarterly	
SCREEN Holdings Co., Ltd.	7735	Electric Appliances	24.8	○	Particulars and reference documents	×	○	×	×	○	Quarterly	Full translation	Full translation	○	Quarterly	Quarterly	
HOYA CORPORATION	7741	Precision Instruments	61.6	○	Full translation	×	○	○	○	○	Quarterly	Other	Other	○	Quarterly	Quarterly	
ASAHI INTECC CO., LTD.	7747	Precision Instruments	32.1	○	Particulars and reference documents	×	○	○	×	×				○	Quarterly	Quarterly	
CANON INC.	7751	Electric Appliances	24.5	○	Full translation	○	○	○	×	○	Quarterly	Full translation	Full translation	○	Quarterly	Quarterly	
RICOH COMPANY,LTD.	7752	Electric Appliances	35.7	○	Full translation	×	×	○	○	○	Quarterly	Full translation	Full translation	○	Quarterly	Quarterly	
BANDAI NAMCO Holdings Inc.	7832	Other Products	45.4	○	Full translation	×	○	○	○	○	Quarterly	Full translation	Full translation	○	Year-end and first half	Year-end and first half	
PILOT CORPORATION	7846	Other Products	27	○	Particulars and reference documents	×	×	×	×	×				×			
ASICS Corporation	7936	Other Products	39.7	○	Particulars and reference documents	×	×	×	×	○	Quarterly	Other	Other	○	Quarterly	Quarterly	
Yamaha Corporation	7951	Other Products	24.3	○	Particulars and reference documents	×	○	○	×	○	Quarterly	Full translation	Full translation	○	Quarterly	Quarterly	





Company	Ticker	Industry	Foreign shareholders (%)	Proxy statement			Resolutions		Financial results			Earnings briefing presentation materials				
				Y/N	Scope	Map	Instructions on the exercise of voting rights	Notice of resolutions	Extraordinary report (results of exercise of voting rights)	Y/N	Frequency	Scope (Year-end)	Scope (Quarterly)	Y/N	Frequency (English)	Frequency (Japanese)
Japan Exchange Group, Inc.	8697	Other Financing Business	41.6	○	Full translation	×	×	○	×	○	Quarterly	Full translation	Full translation	○	Year-end and first half	Year-end and first half
kabu.com Securities Co., Ltd.	8703	Securities and Commodities Futures	10.1	×				×	×	○	Quarterly	Other	Other	×		
MS&AD Insurance Group Holdings, Inc.	8725	Insurance	35.7	○	Full translation	×	○	○	×	○	Quarterly	Full translation	Full translation	○	Quarterly	Quarterly
Sony Financial Holdings Inc.	8729	Insurance	18.7	○	Particulars and reference documents	×	○	○	○	○	Quarterly	Full translation	Full translation	○	Quarterly	Quarterly
Dai-ichi Life Holdings, Inc.	8750	Insurance	43.7	○	Full translation	×	○	○	×	○	Quarterly	Full translation	Full translation	○	Quarterly	Quarterly
Tokio Marine Holdings, Inc.	8766	Insurance	42.8	○	Full translation	×	○	○	○	○	Quarterly	Full translation	Full translation	○	Quarterly	Quarterly
T&D Holdings, Inc.	8795	Insurance	37.7	○	Full translation	×	○	○	×	○	Quarterly	Full translation	Full translation	○	Quarterly	Quarterly
Mitsui Fudosan Co., Ltd.	8801	Real Estate	50.8	○	Other	×	×	○	×	○	Quarterly	Summary information only	Summary information only	○	Quarterly	Quarterly
Mitsubishi Estate Company, Limited	8802	Real Estate	45.4	○	Full translation	×	○	×	○	○	Quarterly	Summary information only	Summary information only	×		
Tokyo Tatemono Co., Ltd.	8804	Real Estate	43.4	○	Other	×	○	×	×	○	Quarterly	Full translation	Full translation	○	Quarterly	Quarterly
Sumitomo Realty & Development Co., Ltd.	8830	Real Estate	30.3	○	Particulars and reference documents	×	—	×	×	○	Quarterly	Other	Other	○	Year-end and first half	Year-end and first half
LEOPALACE21 CORPORATION	8848	Real Estate	49.7	○	Full translation except auditor's report	×	×	×	×	○	Quarterly	Other	Full translation	○	Quarterly	Quarterly
Starts Corporation Inc.	8850	Real Estate	15.3	×				×	×	×				×		
Reio Group, Inc.	8876	Services	31.2	○	Particulars and reference documents	○	×	×	×	○	Quarterly	Summary information and financial statements	Summary information and financial statements	○	Year-end and first half	Year-end and first half
AEON Mall Co., Ltd.	8905	Real Estate	24	○	Particulars and reference documents	×	○	×	○	○	Quarterly	Full translation	Full translation	○	Quarterly	Quarterly
NTT URBAN DEVELOPMENT CORPORATION	8933	Real Estate	20.5	○	Full translation	×	○	○	○	○	Quarterly	Full translation	Full translation	○	Quarterly	Quarterly
TOBU RAILWAY CO., LTD.	9001	Land Transportation	18	○	Particulars and reference documents	×	×	×	×	×				○	Year-end and first half	Year-end and first half
Sotetsu Holdings, Inc.	9003	Land Transportation	6.9	○	Particulars and reference documents	×	○	×	×	×				○	Quarterly	Quarterly
TOKYU CORPORATION	9005	Land Transportation	18.1	○	Particulars and reference documents	×	×	×	×	○	Quarterly	Full translation	Full translation	○	Quarterly	Quarterly
Odakyu Electric Railway Co., Ltd.	9007	Land Transportation	11.4	○	Particulars and reference documents	×	×	×	×	×				○	Year-end and first half	Year-end and first half
Keio Corporation	9008	Land Transportation	13.6	○	Particulars and reference documents	×	×	×	×	×				○	Year-end and first half	Year-end and first half
Keisei Electric Railway Co., Ltd.	9009	Land Transportation	21.4	○	Other	×	○	×	×	×				○	Year-end and first half	Year-end and first half
East Japan Railway Company	9020	Land Transportation	35.8	○	Full translation	×	×	○	×	○	Quarterly	Full translation	Full translation	○	Year-end and first half	Year-end and first half
West Japan Railway Company	9021	Land Transportation	30.6	○	Full translation	×	○	○	×	○	Quarterly	Other	Other	○	Quarterly	Quarterly
Central Japan Railway Company	9022	Land Transportation	22.3	○	Particulars and reference documents	×	×	○	×	○	Quarterly	Other	Other	○	Year-end and first half	Year-end and first half
SEIBU HOLDINGS INC.	9024	Land Transportation	25.5	○	Full translation	×	○	×	×	○	Quarterly	Full translation	Full translation	○	Year-end and first half	Year-end and first half
Nishi-Nippon Railroad Co., Ltd.	9031	Land Transportation	7.9	×				×	×	×				×		
Kintetsu Group Holdings Co., Ltd.	9041	Land Transportation	14.3	○	Particulars and reference documents	×	○	×	×	×				×		
Hankyu Hanshin Holdings, Inc.	9042	Land Transportation	20	○	Particulars and reference documents	×	○	○	×	×				×		
Nankai Electric Railway Co., Ltd.	9044	Land Transportation	8.9	○	Particulars and reference documents	×	×	×	×	×				×		
Keihan Holdings Co., Ltd.	9045	Land Transportation	12.8	○	Particulars and reference documents	×	○	×	×	○	Quarterly	Other	Other	○	Year-end and first half	Year-end and first half
Nagoya Railroad Co., Ltd.	9048	Land Transportation	15.3	×				×	×	×	Quarterly	Other	Other	×		
NIPPON EXPRESS CO., LTD.	9062	Land Transportation	21.9	○	Particulars and reference documents	×	×	○	×	○	Quarterly	Full translation	Full translation	○	Quarterly	Quarterly
YAMATO HOLDINGS CO., LTD.	9064	Land Transportation	28.8	○	Full translation	△	○	○	×	○	Quarterly	Full translation	Full translation	○	Quarterly	Quarterly
SANKYU INC.	9065	Land Transportation	25.6	×				×	×	×				×		
Hitachi Transport System, Ltd.	9086	Land Transportation	17.7	○	Particulars and reference documents	×	×	×	×	○	Quarterly	Full translation	Full translation	○	Quarterly	Quarterly
Japan Airlines Co., Ltd.	9201	Air Transportation	25.8	○	Full translation	×	○	○	×	○	Quarterly	Full translation	Full translation	○	Quarterly	Quarterly
ANA HOLDINGS INC.	9202	Air Transportation	10.3	○	Full translation	×	○	○	×	○	Quarterly	Full translation	Full translation	○	Quarterly	Quarterly
Nippon Television Holdings, Inc.	9404	Information & Communication	19.4	○	Other	○	○	○	×	○	Quarterly	Summary information and financial statements	Summary information and financial statements	○	Quarterly	Quarterly
NIPPON TELEGRAPH AND TELEPHONE CORPORATION	9432	Information & Communication	28.7	○	Full translation	○	○	○	○	○	Quarterly	Full translation	Full translation	○	Quarterly	Quarterly
KDDI CORPORATION	9433	Information & Communication	36.2	○	Full translation	×	○	○	○	○	Quarterly	Full translation	Full translation	○	Quarterly	Quarterly
HIKARI TSUSHIN, INC.	9435	Information & Communication	24.2	×				×	×	×				○	Quarterly	Quarterly
NTT DOCOMO, INC.	9437	Information & Communication	13.8	○	Full translation	×	×	○	○	○	Quarterly	Full translation	Full translation	○	Quarterly	Quarterly
GMO internet Inc.	9449	Information & Communication	29	○	Particulars and reference documents	×	×	×	×	○	Quarterly	Full translation	Full translation	○	Quarterly	Quarterly
CHUBU Electric Power Co., Inc.	9502	Electric Power and Gas	22.5	×				×	×	○	Quarterly	Full translation	Full translation	○	Quarterly	Quarterly
The Kansai Electric Power Company, Incorporated	9503	Electric Power and Gas	26.1	×				×	×	○	Quarterly	Other	Other	○	Quarterly	Quarterly
Tohoku Electric Power Co., Inc.	9506	Electric Power and Gas	22.3	×				×	×	○	Quarterly	Summary information and financial statements	Summary information and financial statements	○	Quarterly	Quarterly
Electric Power Development Co., Ltd.	9513	Electric Power and Gas	29.5	○	Other	×	×	○	○	○	Quarterly	Full translation	Full translation	○	Quarterly	Quarterly
TOKYO GAS CO., LTD.	9531	Electric Power and Gas	32.5	○	Full translation	×	○	○	×	○	Quarterly	Full translation	Full translation	○	Quarterly	Quarterly
OSAKA GAS CO., LTD.	9532	Electric Power and Gas	27.2	○	Full translation	×	○	○	○	○	Quarterly	Full translation	Full translation	○	Quarterly	Quarterly
TOHO GAS Co., Ltd.	9533	Electric Power and Gas	16.8	○	Particulars and reference documents	×	○	○	×	○	Quarterly	Other	Other	○	Quarterly	Quarterly
TOHO CO., LTD.	9602	Information & Communication	14.8	○	Particulars and reference documents	×	×	×	×	×				○	Year-end only	Quarterly
NTT DATA CORPORATION	9613	Information & Communication	17	○	Full translation	×	○	○	×	○	Quarterly	Other	Full translation	○	Quarterly	Quarterly
AIN HOLDINGS INC.	9627	Retail Trade	37.6	○	Particulars only	×	×	×	×	○	Quarterly	Other	Full translation	○	Quarterly	Quarterly
Kanamoto Co., Ltd.	9678	Services	22.7	○	Full translation	○	○	×	×	○	Quarterly	Full translation	Full translation	×		
SQUARE ENIX HOLDINGS CO., LTD.	9684	Information & Communication	44.9	○	Other	×	×	○	○	○	Quarterly	Other	Full translation	○	Quarterly	Quarterly
SCSK Corporation	9719	Information & Communication	19.7	○	Other	×	○	×	×	○	Quarterly	Full translation	Full translation	○	Quarterly	Quarterly
SECOM CO., LTD.	9735	Services	43.4	○	Full translation	×	×	○	×	○	Quarterly	Other	Full translation	×		
MEITEC CORPORATION	9744	Services	40.4	○	Other	×	×	○	○	○	Quarterly	Other	Full translation	○	Quarterly	Quarterly

Company	Ticker	Industry	Foreign shareholders (%)	Proxy statement			Resolutions		Financial results			Earnings briefing presentation materials				
				Y/N	Scope	Map	Instructions on the exercise of voting rights	Notice of resolutions	Extraordinary report (results of exercise of voting rights)	Y/N	Frequency	Scope (Year-end)	Scope (Quarterly)	Y/N	Frequency (English)	Frequency (Japanese)
KONAMI HOLDINGS CORPORATION	9766	Information & Communication	33.6	○	Full translation	×	○	○	×	○	Quarterly	Full translation	Full translation	○	Quarterly	Quarterly
AEON DELIGHT CO.,LTD.	9787	Services	21	○	Particulars and reference documents	×	×	×	○	○	Quarterly	Summary information and financial statements	Summary information and financial statements	○	Quarterly	Quarterly
NIPPON STEEL & SUMIKIN BUSSAN CORPORATION	9810	Wholesale Trade	10	○	Particulars and reference documents	×	×	○	×	○	Quarterly	Full translation	Full translation	○	Year-end and first half	Quarterly
Nitori Holdings Co.,Ltd.	9843	Retail Trade	33.7	○	Particulars and reference documents	×	×	×	×	○	Quarterly	Summary information and financial statements	Summary information and financial statements	○	Quarterly	Quarterly
Valor Holdings Co., Ltd.	9956	Wholesale Trade	3.9	×				×	×	×				×		
MISUMI Group Inc.	9962	Wholesale Trade	3.9	○	Other	×	×	○	×	○	Quarterly	Other	Full translation	○	Year-end and first half	Year-end and first half
FAST RETAILING CO.,LTD.	9983	Wholesale Trade	3.9	○	Full translation	×	×	○	×	○	Quarterly	Full translation	Full translation	○	Quarterly	Quarterly
SoftBank Group Corp.	9984	Wholesale Trade	3.9	○	Full translation	○	○	○	○	○	Quarterly	Full translation	Full translation	○	Quarterly	Quarterly
SUNDRUG CO.,LTD.	9989	Wholesale Trade	3.9	○	Particulars and reference documents	×	×	×	×	×				×		

\*Foreign shareholders (%) as of spring 2017. Most recent quarterly data used when data as of spring 2017 not available.

\*△\* under "Map" (Convocation notice) indicates that although there is no map, there is a written description of the route from the nearest station, etc. "—" indicates that there is no map in either the Japanese or English version.

\*○\* under "Instructions on the exercise of voting rights" indicates that instructions on the exercise of voting rights are translated as a separate page. "—" indicates that there is no such separate page in the Japanese version. "x" indicates that it is not translated, or is translated only as a note to the particulars.

\*○\* under "Notice of resolutions" includes companies that post this information on their website as a report on the general meeting of shareholders instead of as a notice of resolutions.

\*Full translation\* under "Scope" (Financial results) includes companies that omit the contents page.